



GMT MONTHLY MEMBERSHIP PROGRESS REPORT

Results as of: 9/30/2018

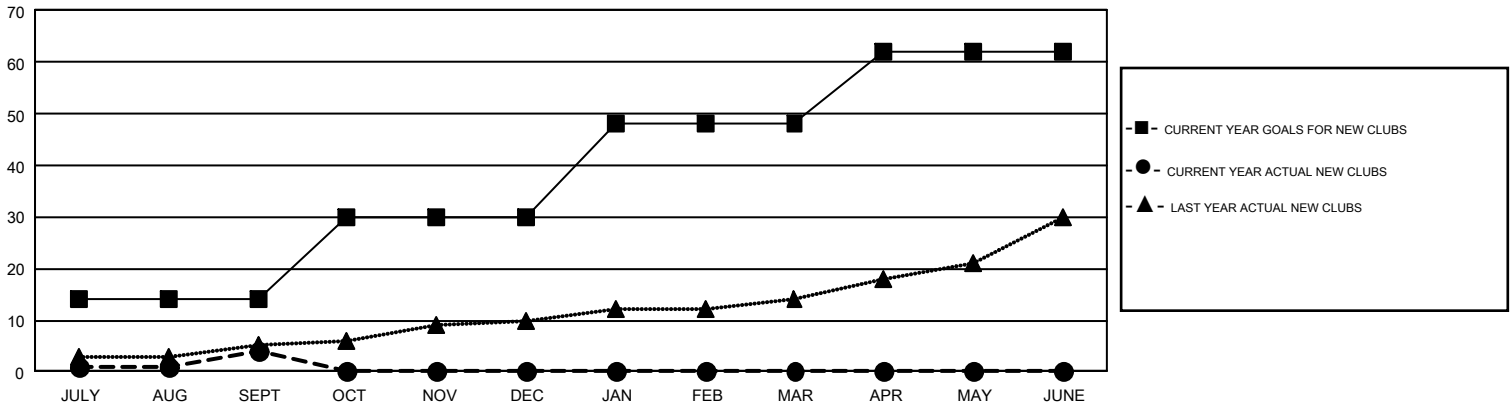
GMT Constitutional Area 1, Group F

GMT: GREGORY GILLIAM

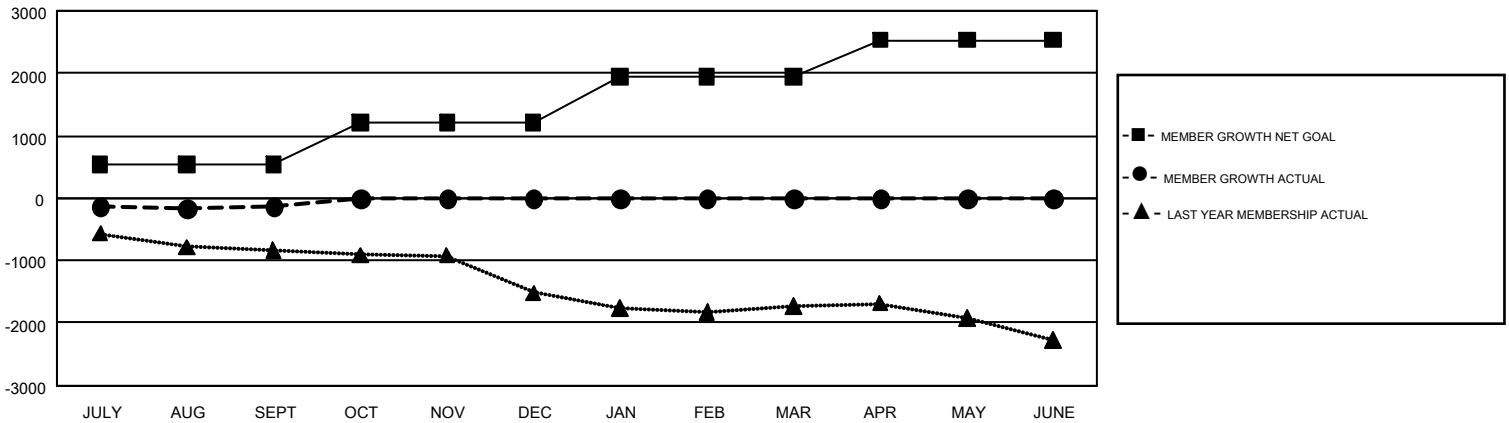
REPORT DOES NOT INCLUDE CLUBS IN UNDISTRICTED AREAS.

Clubs				Members			
RESULTS FOR 2018-2019				RESULTS FOR 2018-2019			
QUARTER	NEW CLUB GOAL	NEW CLUBS	DROPPED CLUBS	QUARTER	MEMBER GROWTH NET GOAL	MEMBER GROWTH ACTUAL	DROPPED MEMBERS ACTUAL (including transfers)
JULY/AUG/SEPT	14	4	8	JULY/AUG/SEPT	536	1,353	1,323
OCT/NOV/DEC	16	0	0	OCT/NOV/DEC	669	0	0
JAN/FEB/MAR	18	0	0	JAN/FEB/MAR	735	0	0
APR/MAY/JUNE	14	0	0	APR/MAY/JUNE	594	0	0

GOALS AND ACTUAL NEW CLUBS CUMULATIVE



GOALS AND ACTUAL MEMBERS CUMULATIVE



DROPPED CLUBS: 8	492 CLUBS OF 1,606 ADDED 1 OR MORE NEW MEMBERS	GENDER DISTRIBUTION MALE 29,670 (66.79%) FEMALE 14,753 (33.21%)
DROPPED MEMBERS DECEASED 111 CLUB CANCELLED 9 OTHER 1,201 <hr/> TOTAL 1,321	CLICK HERE FOR CUMULATIVE MEMBERSHIP DATA	TOTAL FAMILY UNIT MEMBERS 7,069 FAMILY MEMBERS PAYING HALF DUES 3,620